

MIAMI RIVER DADE COUNTY, FLORIDA PROJECT CONDITION SURVEY FY21 15-FOOT PROJECT

SURVEY NOTES

- REFER TO SURVEY NO. 21-002.
 - SOUNDINGS ARE IN FEET AND TENTHS AND REFER TO NOAA'S REPORTED MEAN LOWER LOW WATER (MLLW) OF THE 1983-2001 TIDAL EPOCH.
 - TIDAL REDUCTIONS WERE OBTAINED UTILIZING A REAL-TIME KINEMATIC (RTK) GPS AND REFERENCED TO MLLW UTILIZING A HYPACK KINEMATIC TIDE DATUM (KT) MODEL. KINEMATIC TIDE DATUM FILE TITLED: "BROWARD-MIAMIDADE-MONROE-COLLIER_2018 05 02.KTD".
 - ALL ELEVATIONS ARE BELOW THE CHART DATUM UNLESS PRECEDED BY A (+) SIGN.
 - PLANE COORDINATES ARE BASED ON THE TRANSVERSE MERCATOR PROJECTION FOR THE EAST ZONE OF FLORIDA AND REFERENCED TO NORTH AMERICAN DATUM OF 1983 (NAD83).
 - ALL STATIONING REFERS TO THE CENTERLINE OF THE CHANNEL.
 - THIS SURVEY WAS PERFORMED USING REAL-TIME KINEMATIC (RTK) GPS WITH THE FOLLOWING REFERENCE BASE LOCATIONS:
REFERENCE BASE LOCATED AT "USCG MIAMI ARP" (PID: BBDD68)
TIDE STAFF LOCATED FROM "MH16 RM 1 1962" (PID: AC2178)
 - DEPTHS DEPICTED BY THIS SURVEY ARE REFERENCED TO MLLW, TIDAL EPOCH 1983-2001, AS REPORTED BY THE NATIONAL OCEANIC AND ATMOSPHERIC ADMINISTRATION (NOAA). A MODIFIED VERSION OF NOAA'S VDATUM MODEL WAS USED TO CALIBRATE TO THE PUBLISHED MLLW HEIGHTS OF THE BENCHMARK BELOW:
NOAA TIDAL STATION "MH 16 RM 1 1962" FOR ALL CUTS (PID: AC2178)
 - VERTICAL MEASUREMENTS WERE MADE USING AN EDGETECH 6205 COMBINED MULT-BEAM AND SIDESCAN TRANSDUCER AND A ROSS 835 SMARTSOUNDER DUAL-FREQUENCY 28/200 KHZ SINGLE-BEAM TRANSDUCER. ALL SOUNDINGS SHOWN ARE IN HIGH FREQUENCY.
- | VESSEL | DATE OF SURVEY | CUTS |
|--------|----------------|----------|
| SB-48 | 18 NOV 2020 | ALL CUTS |
- AIDS TO NAVIGATION WERE LOCATED DURING THIS SURVEY.
 - THE INFORMATION DEPICTED ON THIS MAP REPRESENTS THE RESULTS OF SURVEYS MADE ON THE DATES INDICATED ABOVE AND CAN ONLY BE CONSIDERED AS INDICATING THE GENERAL CONDITIONS AT THAT TIME. THIS CHART IS SOLELY FOR THE DISTRIBUTION OF AVAILABLE DEPTHS AT THE TIME OF THE SURVEY.
 - SURVEY ACCURACY PERFORMANCE STANDARDS, QUALITY CONTROL, AND QUALITY ASSURANCE REQUIREMENTS WERE FOLLOWED DURING THIS SURVEY IN ACCORDANCE WITH USACE EM 1110-2-1003, HYDROGRAPHIC SURVEYING, 30 NOV 2013.

LEGEND	
	MONUMENT
	LIGHTED BEACON
	GREEN DAYBEACON
	RED DAYBEACON
	RED LIGHTED BUOY
	GREEN LIGHTED BUOY
	CAN BUOY
	NUN BUOY
	TIDE STAFF
8	PROJECT DEPTH

US Army Corps of Engineers
Jacksonville District

SAFETY ON THIS JOB
DEPENDS ON YOU

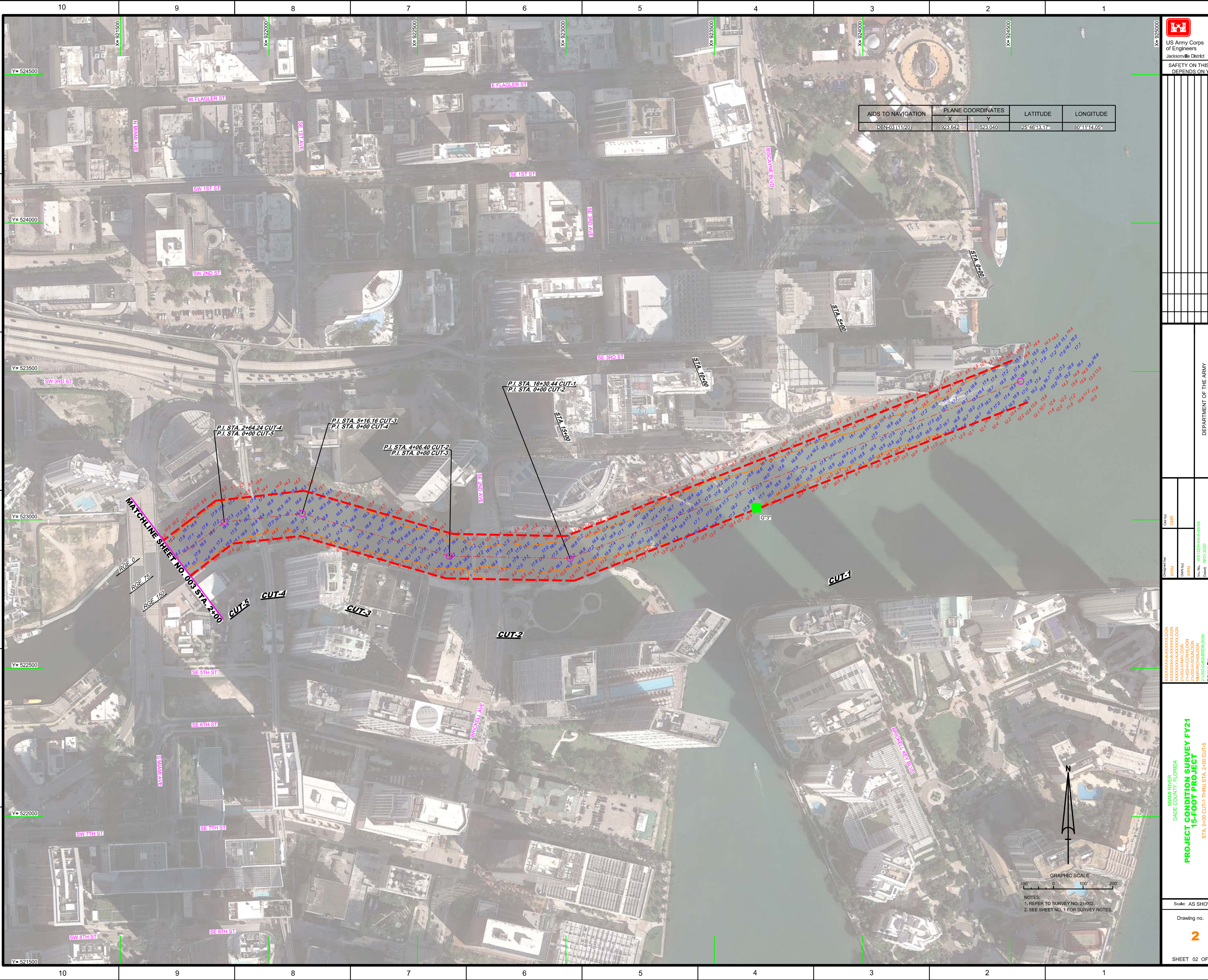
DEPARTMENT OF THE ARMY
JACKSONVILLE DISTRICT, CORPS OF ENGINEERS
JACKSONVILLE, FLORIDA

MIAMI RIVER
DADE COUNTY, FLORIDA
PROJECT CONDITION SURVEY FY21
15-FOOT PROJECT
INDEX, LOCATION AND VICINITY
MAP

Scale: AS SHOWN

Drawing no.
1

SHEET 01 OF 11



AIDS TO NAVIGATION	PLANE COORDINATES		LATITUDE	LONGITUDE
	X	Y		
DBN-03 (11/20)	923,642	523,040	25°46'13.17"	80°11'14.05"

US Army Corps of Engineers

 Jacksonville District

SAFETY ON THIS JOB DEPENDS ON YOU

DEPARTMENT OF THE ARMY

 JACKSONVILLE DISTRICT, CORPS OF ENGINEERS

 JACKSONVILLE, FLORIDA

Drawn by: GHR

 Designated by: WRM

 Design: NOV 2020

MIAMI RIVER

 DADE COUNTY, FLORIDA

PROJECT CONDITION SURVEY FY21

15-FOOT PROJECT

 STA. 0+00 CUT-1 THRU STA. 2+00 CUT-5

PLAN

Scale: AS SHOWN

 Drawing no.

2

 SHEET 02 OF 11

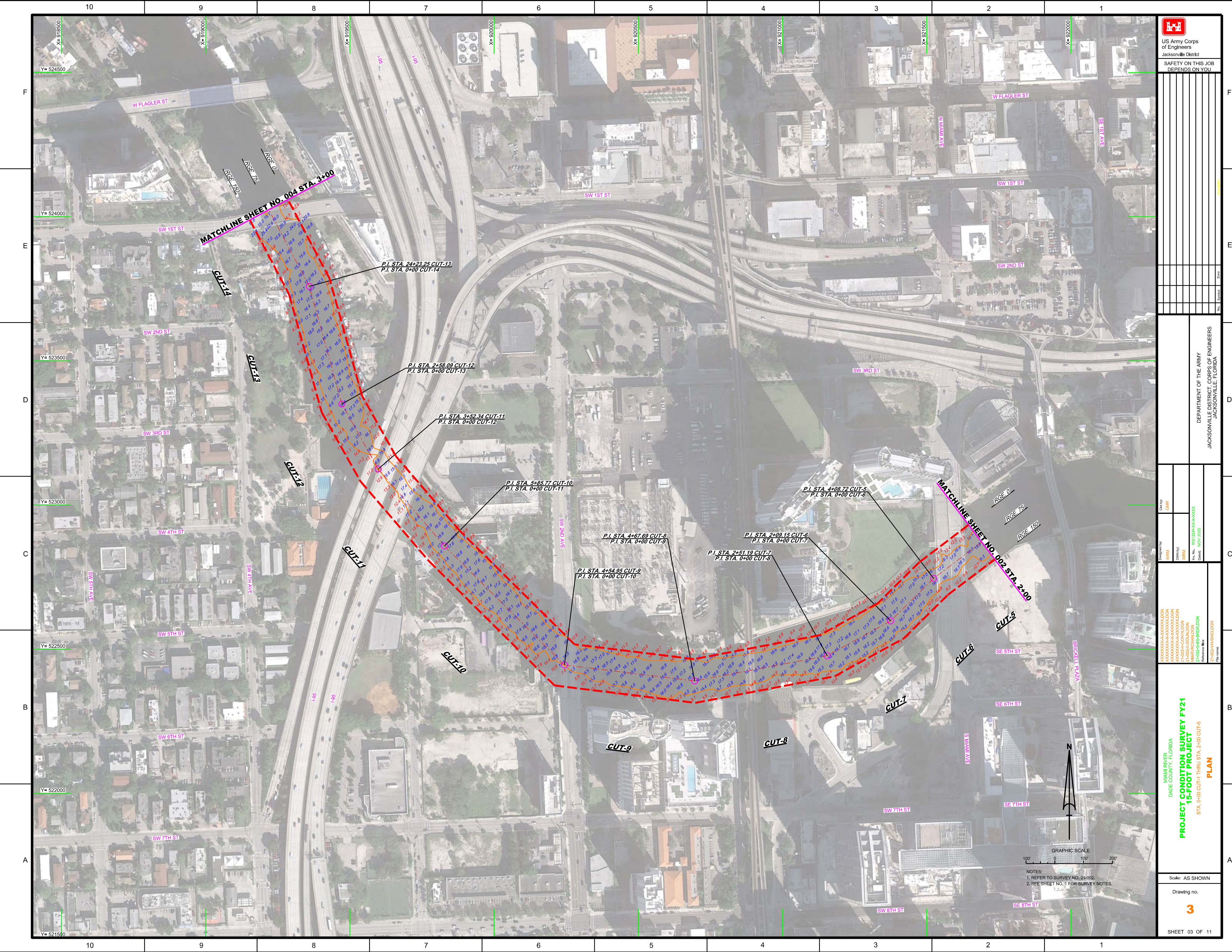
GRAPHIC SCALE

 0 100 200

 NOTES:

 1. REFER TO SURVEY NO. 21-002.

 2. SEE SHEET NO. 1 FOR SURVEY NOTES.



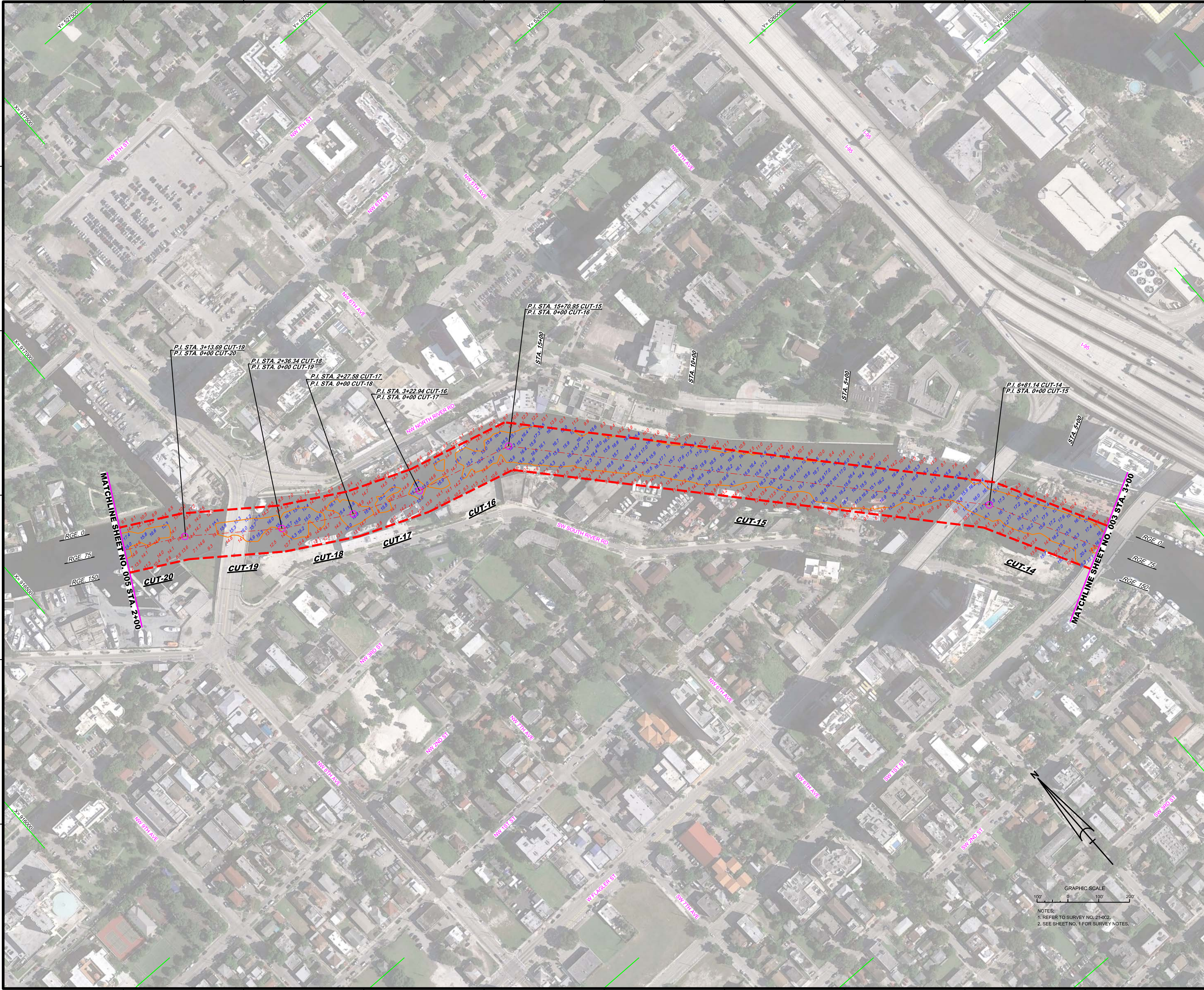
10 9 8 7 6 5 4 3 2 1

F
E
D
C
B
A

X= 918500
X= 919000
X= 919500
X= 920000
X= 920500
X= 921000
X= 921500
X= 922000

Y= 524500
Y= 524000
Y= 523500
Y= 523000
Y= 522500
Y= 522000
Y= 521500

F
E
D
C
B
A



US Army Corps of Engineers
Jacksonville District

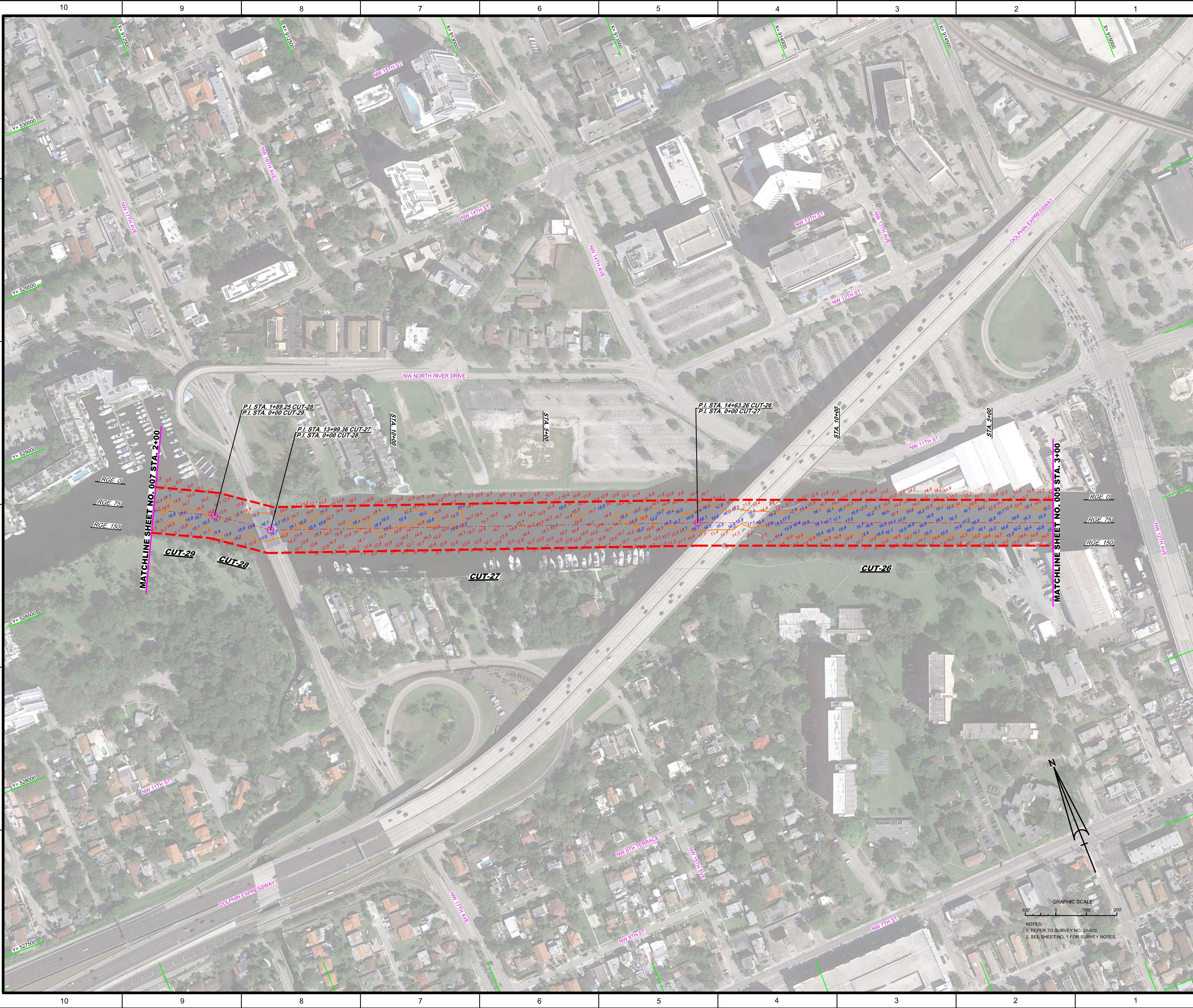
SAFETY ON THIS JOB
DEPENDS ON YOU


DEPARTMENT OF THE ARMY
JACKSONVILLE DISTRICT, CORPS OF ENGINEERS
JACKSONVILLE, FLORIDA

Checked By: GHR
Designed By: WRM
Drawn By: WRM
File No.: W91255-000-0004
Date: NOV 2020

PROJECT CONDITION SURVEY FY21
15-FOOT PROJECT
STA. 3+00 CUT-14 THRU STA. 2+00 CUT-20
PLAN

Scale: AS SHOWN
Drawing no. **4**
SHEET 04 OF 11

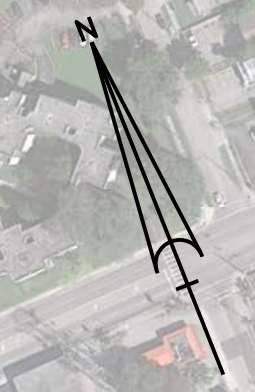




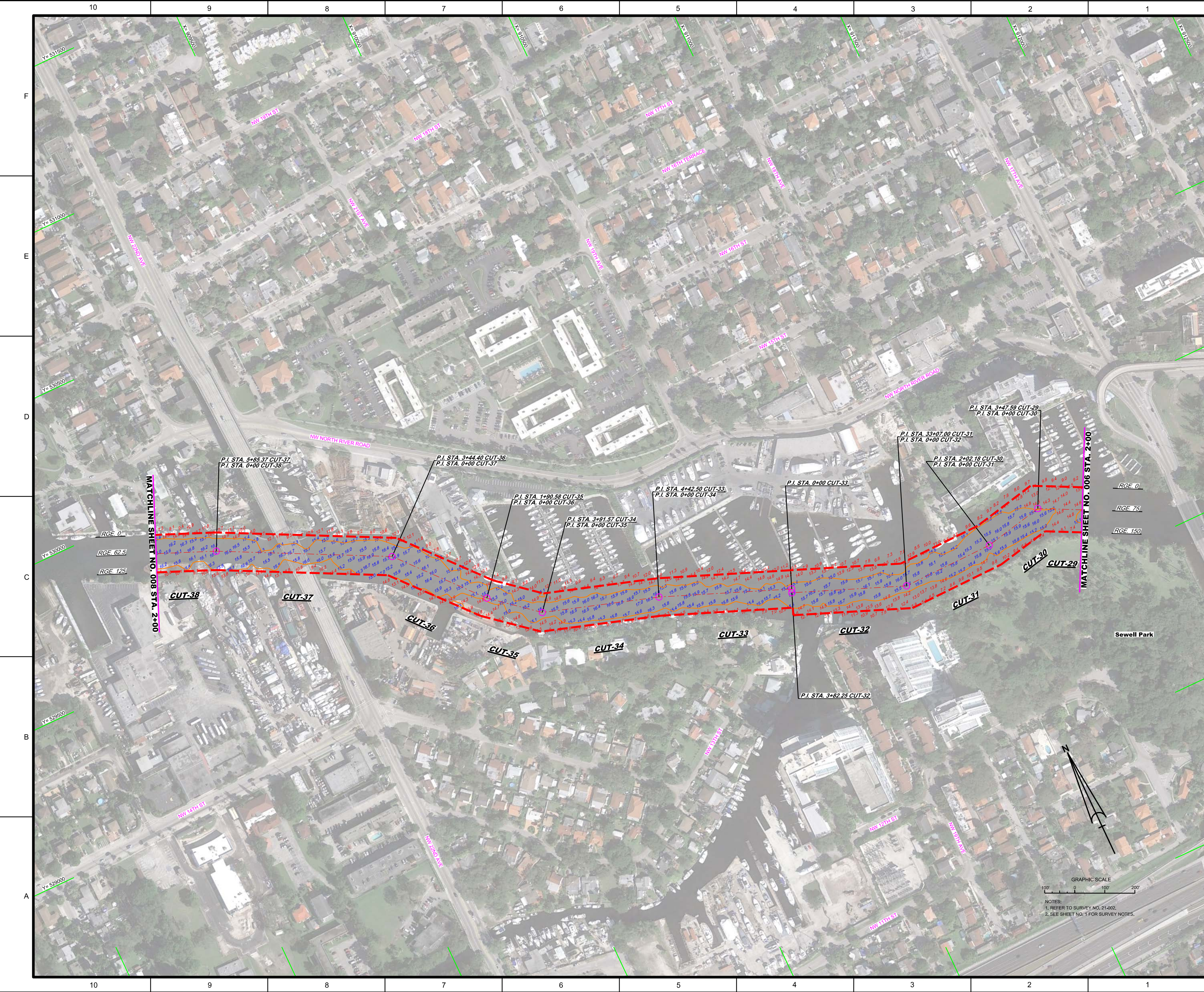
US Army Corps
of Engineers
Jacksonville District

**SAFETY ON THIS JOB
DEPENDS ON YOU**

Designated By: WRM Drawn By: WRM Check By: WRM Date: NOV 2020	Drawn By: GHR Check By: GHR Date: NOV 2020
DEPARTMENT OF THE ARMY JACKSONVILLE DISTRICT, CORPS OF ENGINEERS JACKSONVILLE, FLORIDA	
<p>PROJECT CONDITION SURVEY FY21 15-FOOT PROJECT STA. 3+00 CUT-26 THRU STA. 2+00 CUT-29 PLAN</p>	
Scale: AS SHOWN Drawing no. 6 SHEET 06 OF 11	



NOTES:
 1. REFER TO SURVEY NO. 21-002.
 2. SEE SHEET NO. 1 FOR SURVEY NOTES.



Y= 531500
Y= 531000
Y= 530500
Y= 529500
Y= 529000

F
E
D
C
B
A

RGE 0
RGE 75
RGE 125
RGE 150

MATCHLINE SHEET NO. 008 STA. 2+00

MATCHLINE SHEET NO. 006 STA. 2+00

P.I. STA. 5+25.37 CUT-37
P.I. STA. 0+00 CUT-38

P.I. STA. 3+44.40 CUT-36
P.I. STA. 0+00 CUT-37

P.I. STA. 1+90.58 CUT-35
P.I. STA. 0+00 CUT-36

P.I. STA. 3+91.57 CUT-34
P.I. STA. 0+00 CUT-35

P.I. STA. 4+42.50 CUT-33
P.I. STA. 0+00 CUT-34

P.I. STA. 0+00 CUT-33

P.I. STA. 3+82.25 CUT-32

P.I. STA. 33+07.00 CUT-31
P.I. STA. 0+00 CUT-32

P.I. STA. 2+02.18 CUT-30
P.I. STA. 0+00 CUT-31

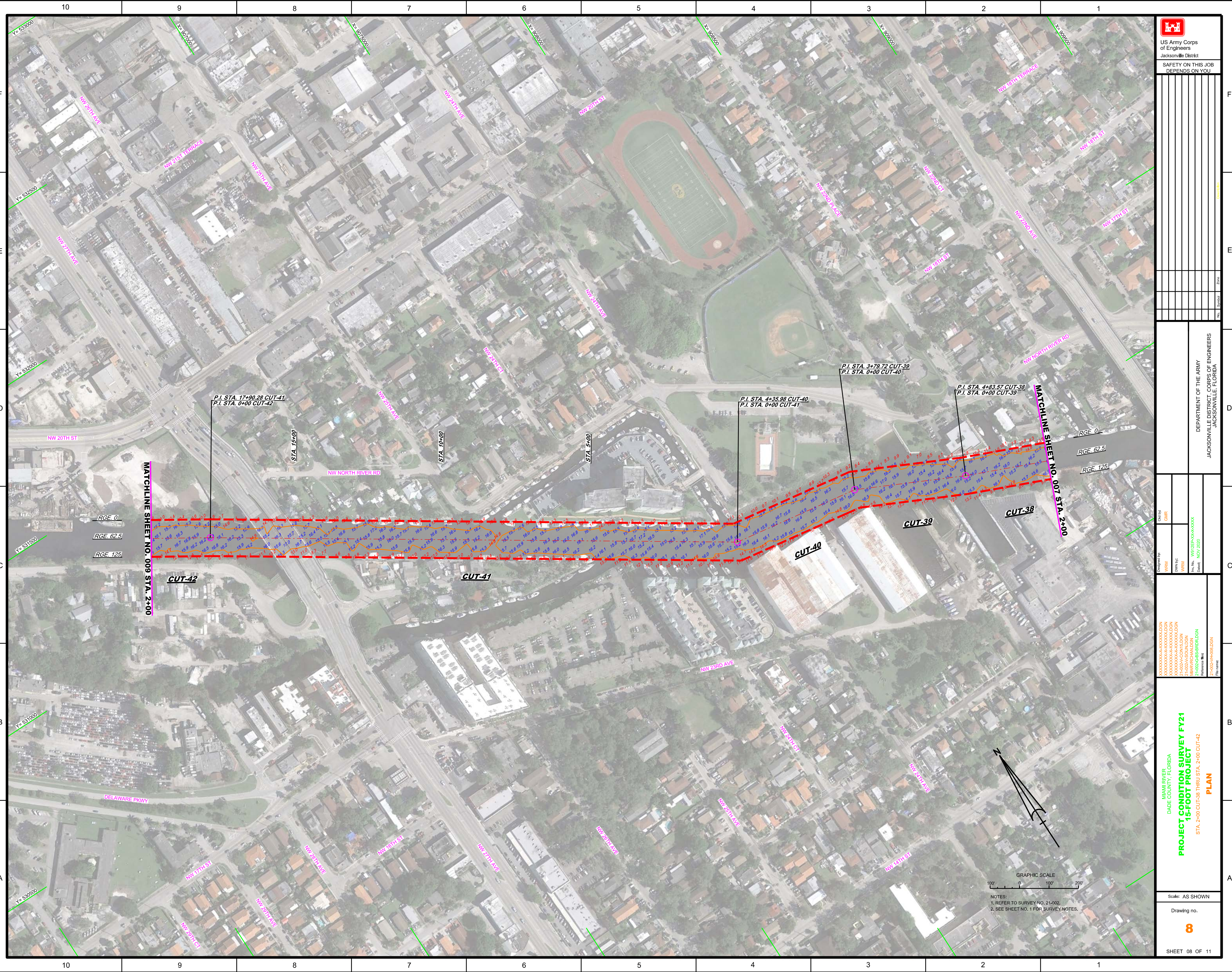
P.I. STA. 3+47.59 CUT-29
P.I. STA. 0+00 CUT-30

CUT-38
CUT-37
CUT-36
CUT-35
CUT-34
CUT-33
CUT-32
CUT-31
CUT-30
CUT-29

GRAPHIC SCALE
100' 0 100 200

NOTES:
1. REFER TO SURVEY NO. 21-002.
2. SEE SHEET NO. 1 FOR SURVEY NOTES.

 US Army Corps of Engineers Jacksonville District SAFETY ON THIS JOB DEPENDS ON YOU	Dept. No. Project No.
	District No. Zone
	Date
DEPARTMENT OF THE ARMY JACKSONVILLE DISTRICT CORPS OF ENGINEERS JACKSONVILLE, FLORIDA	Prepared By: WRM Checked By: WRM Date: NOV 2020
PROJECT CONDITION SURVEY FY21 15-FOOT PROJECT STA. 2+00 CUT-29 THRU STA. 2+00 CUT-38 PLAN	Drawing no. 7
SHEET 07 OF 11	

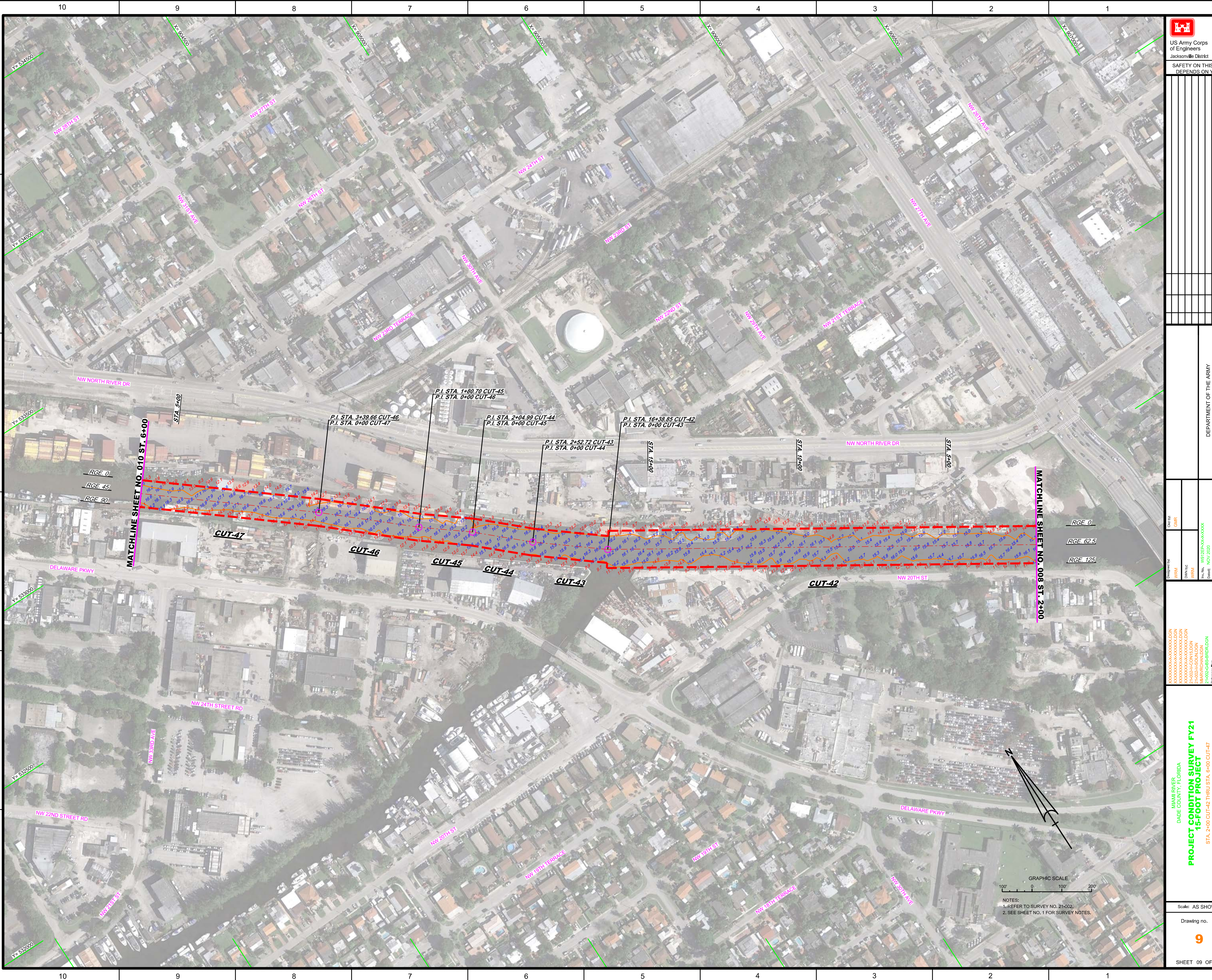


Department of the Army
 Jacksonville District, Corps of Engineers
 Jacksonville, Florida
 Date: NOV 2020
 Project: 15-FOOT PROJECT
 Plan: STA. 2+400 CUT-38 THRU STA. 2+400 CUT-42

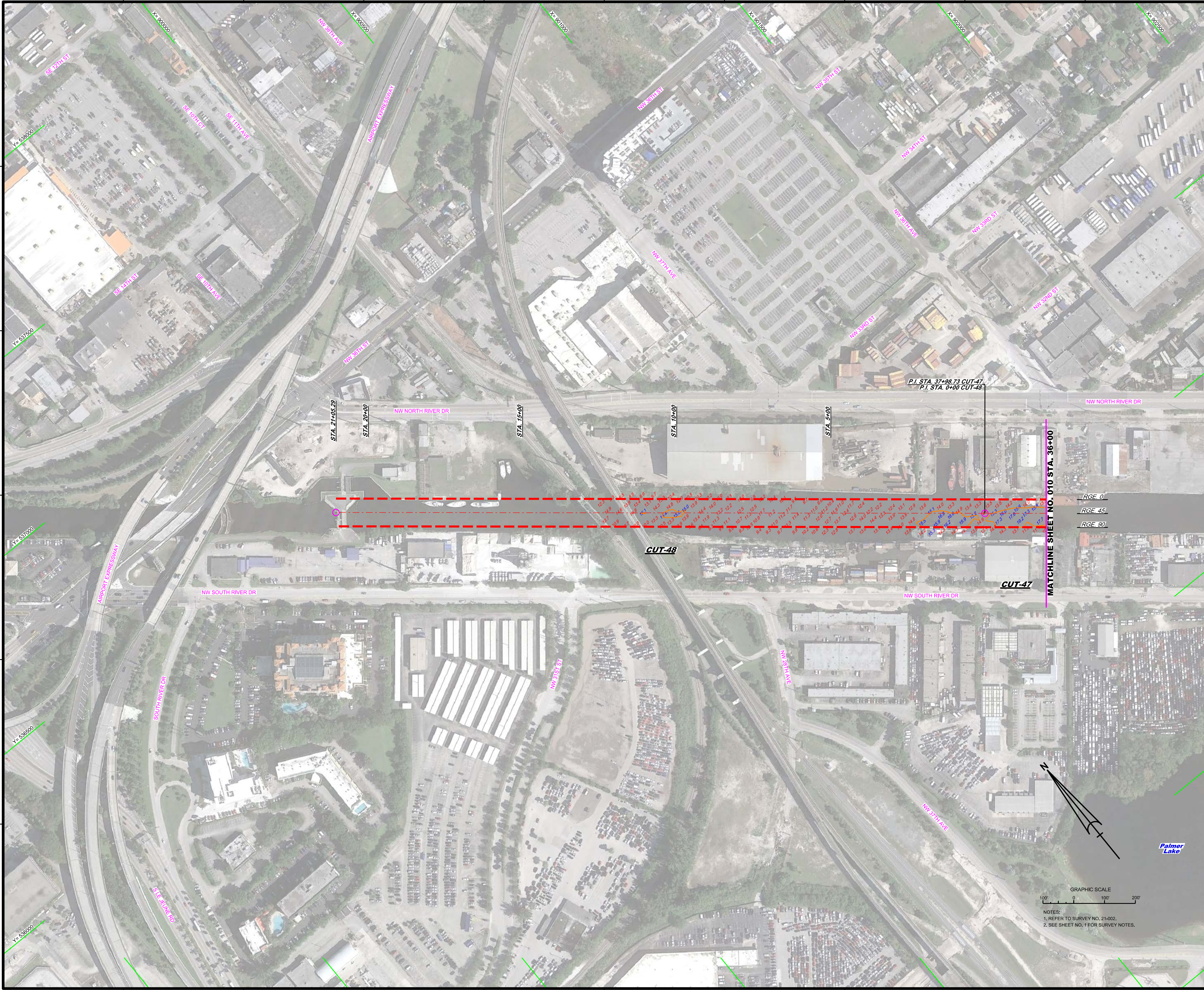
PROJECT CONDITION SURVEY FY21
15-FOOT PROJECT
PLAN
 STA. 2+400 CUT-38 THRU STA. 2+400 CUT-42

Scale: AS SHOWN
 Drawing no. **8**
 SHEET 08 OF 11

GRAPHIC SCALE
 100' 0' 100' 200'
 NOTES:
 1. REFER TO SURVEY NO. 21-002.
 2. SEE SHEET NO. 1 FOR SURVEY NOTES.



GRAPHIC SCALE
100' 0 100' 200'
NOTES:
1. REFER TO SURVEY NO. 21-002.
2. SEE SHEET NO. 1 FOR SURVEY NOTES.



RGE. 0
RGE. 45
RGE. 80

GRAPHIC SCALE
0 100' 200'
NOTES:
1. REFER TO SURVEY NO. 21-002.
2. SEE SHEET NO. 1 FOR SURVEY NOTES.